

View this email [in your browser](#).



## Stay Safe.

As of this week, **pool industry construction is open** in Connecticut, New Jersey, Pennsylvania and five regions in New York State (with more expected to open this week). We have also seen **non-essential retail reopen for curbside pick-up and delivery**. **Pool service and maintenance continues to be recognized as an essential business**.

This is great news for our industry and to keep moving in this direction, it is important that businesses follow all the new safety requirements implemented by state officials. As we get back to business, understand that if you do not follow the required safety guidelines your business is at risk of being shut down by local authorities.

We know that many of our members work across multiple states. Below you will find a breakdown of safety guidelines and resources for each state so you can prepare your business.

---

## Work Smart.

**Stay up-to-speed on the latest news around our region.**

### Connecticut

On May 20th, Phase 1 of the State's reopening is scheduled to begin. There are specific safety guidelines that businesses must follow during this phase.

## CT Safety Guidelines

- [Retail Safety Guidelines](#) (Phase 1)
- [Safe Workplace Rules for Essential Employers](#)
- [Additional Safety Guidelines for Construction](#)

## Connecticut Resource Page

## New Jersey

### Today! NJ Reopens Construction; Ease Restrictions on Non-Essential Retail

Governor Murphy announced that effective today - Monday, May 18th - non-essential construction can restart and non-essential retail stores can reopen for curbside pickup only. There are specific safety guidelines that each type of business must follow to operate at this time.

## NJ Safety Guidelines

- [Executive Order 142 - Reopening of non-essential construction/retail](#)
- [Safety Guidelines for Reopening](#)
- [FAQs on Reopening from Governor's Office](#)

## New Jersey Resource Page

## New York

### Several NY Regions Begin Phase 1 Reopening

So far, five regions have been approved for Phase 1 reopening. Additional regions are expected to meet the reopening criteria as soon as this week.

A new online tool has been developed by Empire State Development to help determine whether your business is able to reopen. The ***New York Forward Business Reopening Lookup Tool*** can be found [here](#). This tool can be used to help you make individual decisions about the operations of your business around the state.

## NY Safety Guidelines:

- [Reference Guide: Construction Guidelines](#)
- [Complete Guidance for Construction](#)
- [Reference Guide: Retail Guidelines](#)

In New York, businesses must develop and have onsite a written Safety Plan.

- [Business Re-Opening Safety Plan Template](#)

## New York Resource Page

## Pennsylvania

Earlier this month (5/1), pool industry construction reopened. Companies working in construction must comply with new safety guidelines.

### PA Safety Guidelines

- [Guidance for PA Construction Industry](#)
- Guidelines from PA Secretary of State: [April 15th](#) and [April 5th](#)
- [PA Department of Industry & Labor: Construction Guidance](#)

## Pennsylvania Resource Page

---

# Stay Connected.

## The Return to Work - Preparing for Week 1

### NEW Webinar! Tuesday, 5/19 at 4pm

Pandemic-driven disruption has changed the way we work, and will likely create long-lasting adjustments to how businesses are run beyond COVID-19. As you begin planning for “back to business,” it’s important to consider how the COVID-19 experience will reshape your workplace, from staffing needs to new safety protocols.

This webinar will focus on how to get your business back up-and-running, post-coronavirus. Join Karen Hall and Frank Preto from Paychex HR as they discuss important steps and considerations for the re-opening process; new workplace safety considerations; best practices for supporting employees as they return to work; and more.

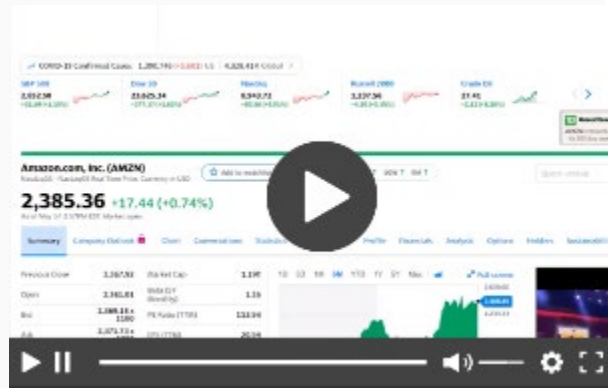
**Open exclusively to NESPA Member Companies,  
this webinar is available for FREE for NESPA Members**

**Register**

## CYMI: Watch Last Week's Webinar

Our latest webinar Interpreting the Market: Where Do We Go From Here took a look at where the markets have been over the last few months as well as how they could change over the summer.

[Watch Now on Demand!](#)



While it is easy to get caught up in the daily ups and downs, this webinar takes a big picture look at major market trends and what could happen in the months ahead.

Don't forget to check out our [Webinar Library](#)! All webinars are available for on-demand viewing at any time for NESPA Members.

PPP & SBA Loans Update	COVID-19 IN THE WORKPLACE	NORTHEAST LEADERS BUSINESS FORUM	SPRING START-UP TRAINING
April 22, 2020 <a href="#">View Now</a>	April 21, 2020 <a href="#">View Now</a>	April 16, 2020 <a href="#">View Now</a>	April 14, 2020 <a href="#">View Now</a>
An in depth look at programs available to help businesses deal with the economic impact of COVID-19.	Learn about legal and practical issues related to the Coronavirus pandemic and business operations.	Hear the steps other companies have been taking to guide their businesses through these unpredictable times.	Guidelines for the successful start-up of swimming pools & spas. Also learn how to comply with CDC Workplace Safety Guidelines during the COVID-19 crisis.

*This information is being provided to you as a member of the Northeast Spa and Pool association and is intended for your use to make decisions about your individual business during the restrictions put in place as a result of the COVID-19 outbreak. If you have concerns about your specific business operation you should consult your attorney. This is not intended as nor should be construed to be legal advice.*

## Questions? Contact NESPA at

609-689-9111 | [info@nespapool.org](mailto:info@nespapool.org) | [www.nespapool.org](http://www.nespapool.org)

[Unsubscribe](#)

